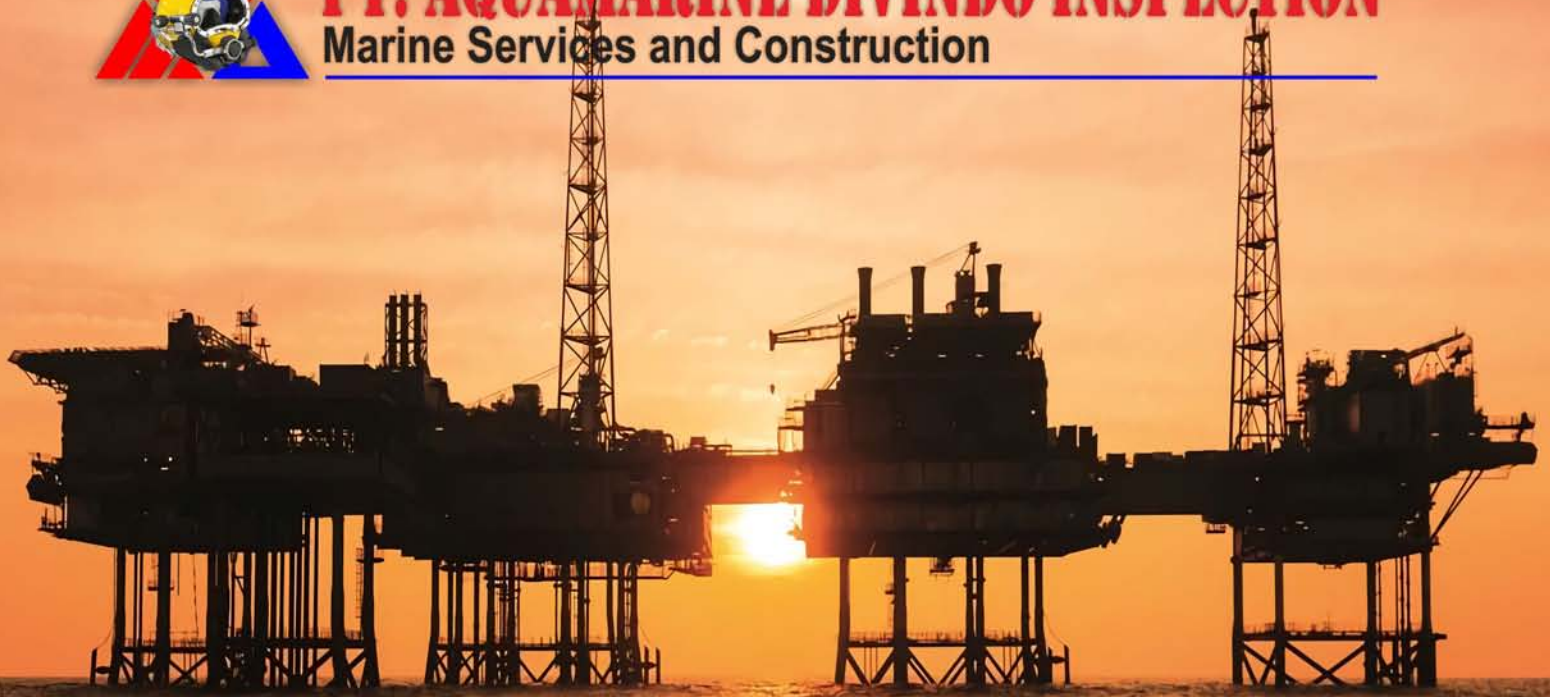




# PT. AQUAMARINE DIVINDO INSPECTION

Marine Services and Construction



# COMPANY PROFILE

[ABOUT US](#) | [LIST OF SERVICES](#) | [EXPERIENCES](#) | [EQUIPMENT](#) | [CLIENTS](#) | [BUSINESS PARTNERS](#) | [CERTIFICATE LICENSES](#)

## Office and Workshop

### PT. AQUAMARINE DIVINDO INSPECTION

KOMP. PERGUDANGAN 88 BLOCK C5-C7

Jl. Raya Sedati Gede 88 Juanda Airport, Sidoarjo, East Java - Indonesia 61253

Phone : +6231 8690099 (Hunting), +6231 8690078, +6231 8690079

Fax : +6231 8680089, Email : [inspection@aquamarine.id](mailto:inspection@aquamarine.id)

## Main Branch Office:

GREEN SEDAYU BIZPARK BLOCK GS 8B NO.09

RT.11/RW.06, Cakung Timur, Kec. Cakung, DKI Jakarta - Indonesia 13910

Phone/Fax: +6221 21057169, Email: [jkt@aquamarine.id](mailto:jkt@aquamarine.id)

[www.aquamarine.id](http://www.aquamarine.id)



Member # 3817



ISO 9001 : 2008  
ISO 14001 : 2015  
ISO 45001 : 2018  
ISO 37001 : 2016

ISO 17020 : 2012

# ABOUT US

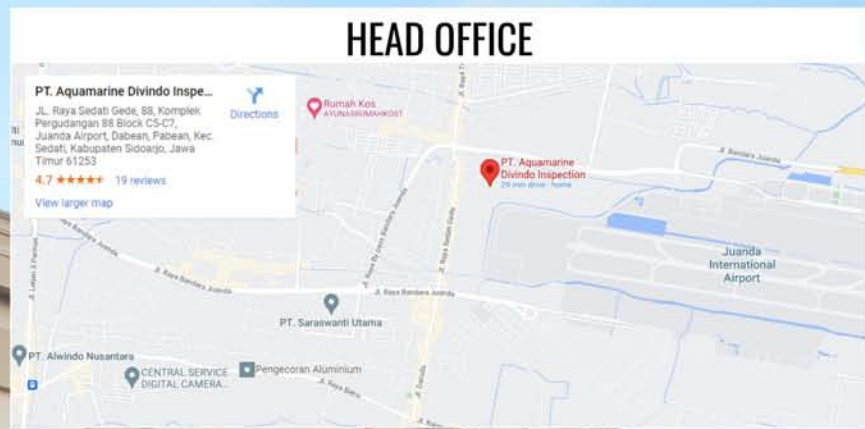
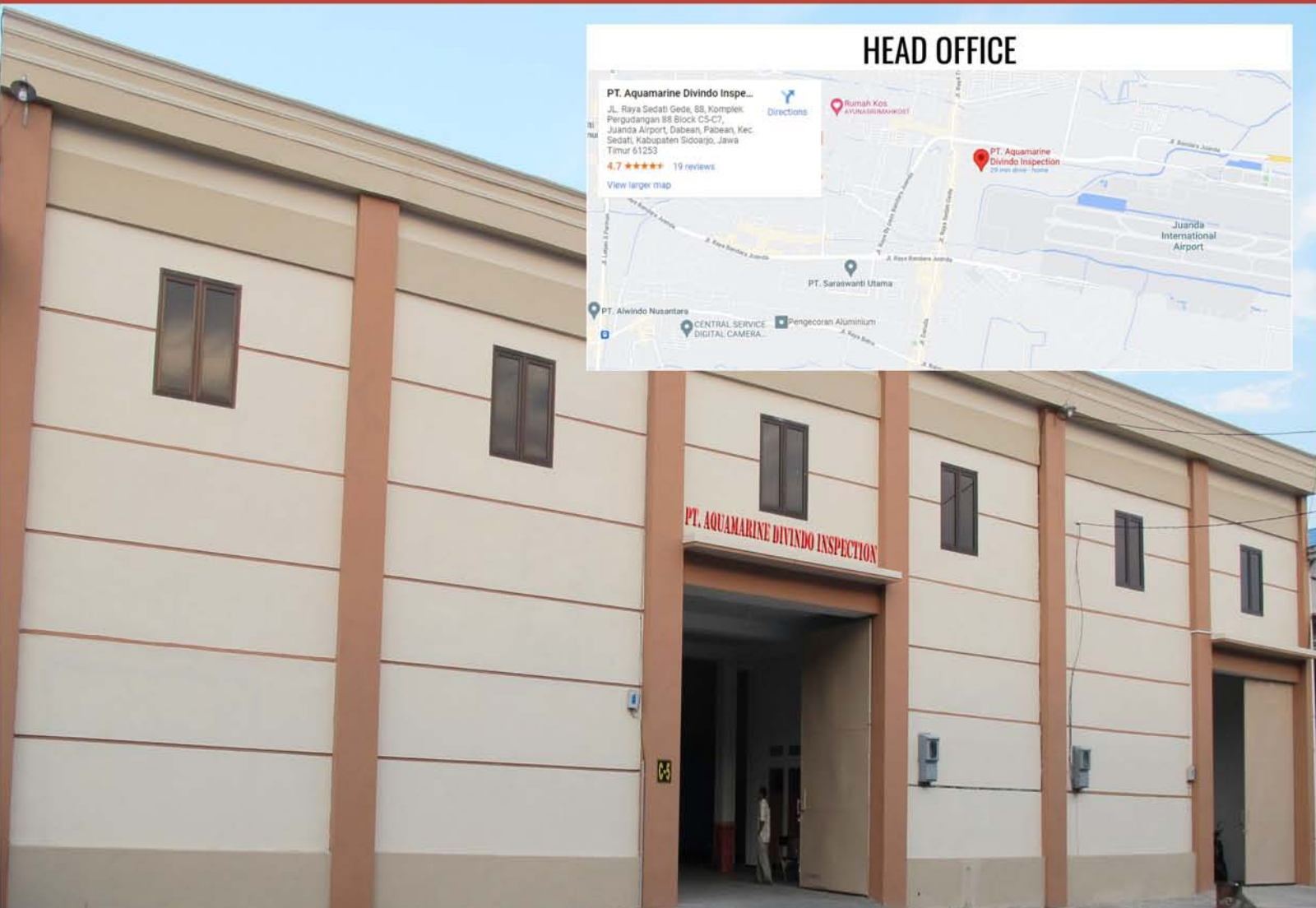
PT AQUAMARINE DIVINDO INSPECTION - is an Indonesian diving company with regional coverage offering general marine services and construction.

Established in 2007, years of experience as a safety diving and marine constructions contractors has brought us to be a recognized party which being important and integral part of offshore oil and gas industry growth in region.

Relevant professionals recognitions and membership has been granted for IMCA & ADCI as General Member, Certifications from IACS for under water works (ABS, BV, NKK, LR, DNVGL, KR, RINA), BKI, Dirjen Hubla and Dirjen Migas.

Our services covers : | FSO/FPSO/FPU/SBM | Mooring - Unmooring | Installation and Hook Up | Subsea Hose & Floating Hose | SBM/SPM and PLEM Replacement | Under Water Services i.e Surveys, Inspections | NDT | Under Water Welding & Cutting | UWILD | Hull and Sea Chest Cleaning | Hull Repair | Propeller Polishing | and many more. Also fully computerized sea trial, 115 Ton Total Water Bag Capacity for Load Test, Bollard Pull Test, etc.

SALT 4 diver Launch and Recovery System (LARS), 20 Ft DDC Chambers, Inspection and Semi Work Class ROVs, hydraulic brush kart machine, air banks, water bags, eddy current, ultrasonic fow detector, MPI, etc are among our owned state of the art equipment strengthening our daily activities.



HEAD OFFICE OF PT AQUAMARINE DIVINDO INSPECTION

# OUR SERVICES

## *Offshore Based Services*

- \* UNDER WATER MARINE CONSTRUCTION
- \* HOOK UP FOR FPSO/FPU/FSO
- \* UNDER WATER INSPECTION, MAINTENANCE & REPAIR (IMR) CAMPAIGN SERVICES
- \* UNDER WATER PLATFORM INSPECTION; ROV SERVICES
- \* PLATFORM INSPECTION & CERTIFICATION
- \* SUBSEA PIPELINE SERVICES
- \* PIPELINE FREE SPAN RECTIFICATION SERVICES
- \* UNDER WATER UMBILICAL, RISER/CABLE INSTALLATION
- \* GROUTING SERVICES & INSTALLATIONS
- \* UNDER WATER INSPECTION IN LIEU OF DRY DOCKING (UWILD)
- \* UNDER WATER SURVEY : MARINE, HARBOR/JETTY CONSTRUCTION, JETTY PILING & MOORING DOLPHIN
- \* UNDER WATER INSPECTION & REPAIR : MARINE, HARBOR/JETTY CONSTRUCTION, JETTY PILING & MOORING DOLPHIN
- \* UNDER WATER WELDING
- \* UNDER WATER NON DESTRUCTIVE TESTING (NDT)
- \* UNDER WATER HULL CLEANING AND MARINE GROWTH REMOVAL
- \* PRE-CONDITION MARINE SURVEY (HYDROGRAPHIC & BATHYMETRY)
- \* CATHODIC PROTECTION INSPECTION, REPLACEMENT, AND INSTALLATION
- \* SBM INSPECTION, REPLACEMENT AND INSTALLATION
- \* MOORING CHAIN INSPECTION, REPLACEMENT & INSTALLATION
- \* FLOATING/SUBSEA HOSE INSTALLATION & REPLACEMENT
- \* SBNP / NAVIGATION BUOY CONSTRUCTION & INSTALLATION
- \* CABLE LAYING (PRE-LAYING, TRENCHING, INTERCONNECTIONS AND JOINTING)

## *Onshore Based Services*

- \* MOORING CHAIN INSTALLATION
- \* OFFSHORE & ONSHORE FACILITY FABRICATION AND MAINTENANCE
- \* LOAD TEST & MAINTENANCE OF : PLATFORM CRANE, VESSEL CRANE, LIFE BOAT & DAVIT
- \* FLOATING REPAIR OF VESSEL
- \* MAINTENANCE & TEST FOR SUBSEA HOSE/FLOATING HOSE
- \* EPCIC OF OFFSHORE MOORING CHAIN & ACCESSORIES
- \* MOORING BUOY FABRICATION & INSTALLATION
- \* ENGINEERING : NAVAL DESIGN
- \* ENGINEERING : MOORING ANALYSIS & CALCULATION
- \* ENGINEERING : SUPERVISION OF VESSEL NEW BUILDING & NEW PLATFORM CONSTRUCTION
- \* ENGINEERING : ISIP / SURVEY PLAN FOR FPSO, FSO, FPU & FSRU
- \* FIBER OPTIC TESTING
- \* BALLAST WATER MANAGEMENT SYSTEM (BWMS)
- \* DREDGING AND RECLAMATION

# OUR EXPERIENCES

## 1. UNDER WATER INSPECTION, MAINTENANCE & REPAIR (IMR) CAMPAIGN

\* IMR CAMPAIGN at PHEWMO MADURA OFFSHORE, Th. 2016



ROV SEMI WORK CLASS SEA EYE PANTHER 946  
DEPLOYMENT FOR UNDER WATER PLATFORM  
INSPECTION (UWPI)



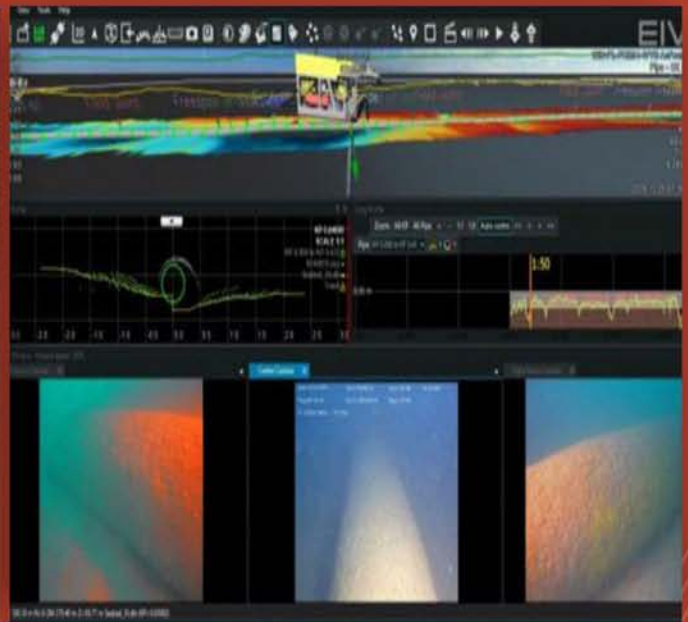
UNDER WATER PIPELINE INSPECTION

## 2. UNDER WATER INSPECTION, MAINTENANCE & REPAIR (IMR) CAMPAIGN

\* IMR CAMPAIGN at PHEWMO MADURA OFFSHORE, Th. 2019



ROV SEMI WORK CLASS SEA EYE PANTHER 946  
DEPLOYMENT FOR PIPELINE INSPECTION



EIVA NARDOA SOFTWARE FOR PIPELINE  
INSPECTION

# OUR EXPERIENCES

## 3. MOORING INSTALLATION, HOOK UP & COMMISSIONING

\* MOORING & HOOK UP OF FSO FEDERAL II at CNOOC OFFSHORE WIDURI FIELD, Th. 2014



FSO FEDERAL II



INSTALL CHAIN TO CHAIN STOPPER

## 4. MOORING, UNMOORING, HOOK UP, COMMISSIONING & DECOMMISSIONING

\* MOORING INSTALLATION, HOOK UP & COMMISSIONING OF FSO LENTERA BANGSA at CNOOC OFFSHORE WIDURI FIELD, Th. 2011

\* DECOMMISSIONING OF FSO MAXUS WIDURI at CNOOC OFFSHORE WIDURI FIELD, Th. 2011



DECOMMISSIONING FSO LENTERA BANGSA



DECOMMISSIONING FSO MAXUS WIDURI

# OUR EXPERIENCES

## 5. SBM REPLACEMENT & INSTALLATION

- \* SBM 1043 REPLACEMENT at CINTA FIELD CNOOC, Th. 2014
- \* SBM & PLEM REPLACEMENT at POLENG FIELD, PHEWMO MADURA OFFSHORE, Th. 2013



TOWING SBM 1043



INSTALLATION OF SPOOL PIECE AT PLEM

## 6. UNDERWATER INSPECTION & REPAIR SUBSEA PIPELINE 16"

- \* UNDERWATER INSPECTION & REPAIR SUBSEA PIPELINE 16" at PHE 39-PLEM & PPP-ORF, Th. 2023



PIPELINE CONCRETE REMOVAL FOR NDT TEST

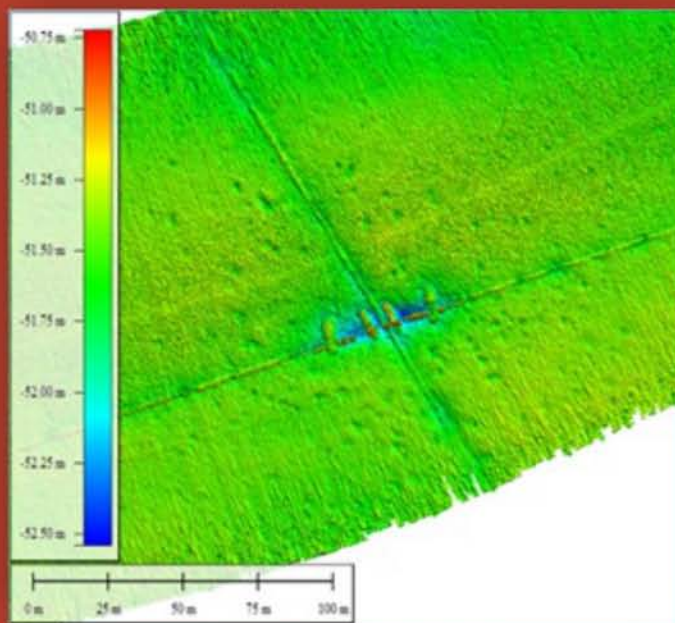


PLIDCO CLAMP INSTALLATION BY ROV WORK CLASS

# OUR EXPERIENCES

## 7. SIDE SCAN SONAR SURVEY

- \* SIDE SCAN SONAR SURVEY EXPORT PIPELINE & INFIELD FLOWLINE, BUKIT TUA FIELD, Th. 2022
- \* PRE-CONDITION SURVEY BY SIDE SCAN SONAR & GPS TRIMBLE, POLENG FIELD, Th. 2013



CROSSING PIPELINE 12"



SIDE SCAN SONAR MODEL EDGETECH 4125  
INSTALLATION

## 8. FLOATING HOSE MAINTENANCE

- \* FLOATING HOSE INSTALLATION & REPLACEMENT OF FSO KAS III at HCML FIELD, WEST MADURA OFFSHORE, Th. 2020
- \* FLOATING HOSE MAINTENANCE & REPLACEMENT OF FSO GAGAK RIMANG at EXXON CEPU FIELD OFFSHORE, Th. 2020
- \* MARINE OPERATIONS SUPPORT SERVICES OF FSO PERTAMINA ABHERKA at POLENG FIELD, PHEWMO MADURA OFFSHORE, Th. 2021
- \* DISMANTLING 12" FLOATING HOSE & INSTALLATION 8" PRODUCTION RISER OF FPSO BROTOJOYO at PUO FIELD, Th. 2011



FSO KAS III



FSO GAGAK RIMANG

# OUR EXPERIENCES

## 9. SHIM INSTALLATION

\* PROVISION MIX GAS DIVING FOR SHIM INSTALLATION at MADURA STRAIT, Th. 2022



MBH PLATFORM



SHIM PLATE INSTALLATION

## 10. INSPECTION OF : JACK-UP RIG, PLATFORM, LIFTBOAT & MOPU

- \* UNDER WATER INSPECTION OF JACK UP RIG JAVA STAR at LAMONGAN SHOREBASE, Th. 2019
- \* CRANE LOADING TEST OF SELF ELEVATING LIFTBOAT TERAS CONQUEST 6 at POLENG FIELD MADURA OFFSHORE, Th. 2015
- \* NDT INSPECTION, CRANE & LIFE BOAT DAVIT LOADING TEST OF JACK UP RIG HYSY 937 at MERAK MAS PORT CILEGON SERANG, Th. 2015
- \* UNDER WATER INSPECTION OF 3 LEG RIG NAGA 2 at TELAGA BIRU PORT, Th. 2013



JACK UP RIG JAVA STAR



UNDERWATER OPEN VALVE



# OUR EXPERIENCES

## 11. UNDERWATER PLATFORM INSPECTION AND FREESPAN RECTIFICATION

\* FREE SPAN RECTIFICATION at HCML MDA-MBH FIELD, Th. 2021



DEPLOYING GROUT BAG TURNTABLE



GROUT BAG CEMENT PUMPING

## 12. FREESPAN RECTIFICATION

\* FREE SPAN RECTIFICATION  
at HCML MDA-MBH FIELD, Th. 2021



GROUT BAG INSTALLATION

## 13. HULL REPAIR

\* INSTALLATION OF FUTURE CONDUCTOR GUIDE  
at PHEWMO MADURA OFFSHORE, Th. 2013

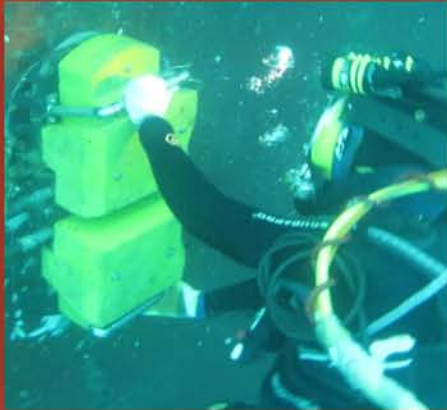


WELDING JOINT CONDUCTOR PIPE

# OUR EXPERIENCES

## 14. OTHERS

### HULL CLEANING



**HULL CLEANING-FPSO ABHERKA**  
(Poleng Field, Th. 2020)

### UWS / UWILD



**UWS**  
**FSO SUCCESS CHALLENGER XXXVII**  
(Poleng Field, Th. 2020)

### ZINC ANODE INSTALLATION



**BG SYUKUR 02**  
(Tanjung Mas, Semarang, Th. 2015)

### CRANE LOAD TEST



**CRANE LOAD TEST-MV KEDUNG MAS**  
(Terminal Peti Kemas SBY, Th. 2021)

### DAVID TEST



**DAVID TEST-RIG HYSY937**  
(Terminal Peti Kemas SBY, Th. 2021)

### NDT



**UW NDT-FPSO PTAP ONE**  
(Malaca Strait, Langsa Aceh, Th. 2015)

### MOORING CHAIN DESIGN & SUPPLY



**SUPPLY FSO MOORING CHAIN**  
(Cnoc Offshore Widuri Field , Th. 2014)

### NAVIGATION BOUY



**NAVIGATION BOUY**  
**INSTALLATION**

### PIPE INSPECTION



**UNDERWATER PIPELINE**  
**INSPECTION BY ROV H800**  
(Poleng Field Madura Offshore, Th. 2013)

# EQUIPMENT LIST

## 1. SEAEYE PANTHER-XT #946 with TMS SYSTEM



### Typical Panther-XT applications:

- Pre and post lay pipeline surveys
- Touch down monitoring
- Cable installation
- Drill support
- IRM
- NDT inspections
- Salvage operations
- Side Scan Sonar
- Multibeam System
- Sonar
- Emergency Strobe
- Cygnus UT Gauge
- Lock Latch Free

## 2. ROV H800 ( REMOTELY OPERATED VEHICLE )



- \* Depth rated to 800 m
- \* All type of sonar (Side Scan Sonar, Imaging Sonar Etc)
- \* Altimeter (With auto altitude function)
- \* Positioning system, Metal detector, Manipulator arm
- \* High resolution digital steel camera
- \* Single & ergonomic hand controller for both the ROV
- \* 5 function manipulator arm
- \* Control unit incorporating the power supply unit

### 3. OPTIFIBER PRO SERIES OTDRS



FLUKE NETWORKS

Singelmode OTDR Module

1310/1550 OFP-SM

Compatible Fiber Types: 50/125  $\mu\text{m}$ , 62.5  $\mu\text{m}$  Singelmode  
Sampling Resolution: 3 cm to 400 cm

### 4. OPTICAL FIBER FUSION SPLICER



Sumitomo, Type Z2C

DC 10V-15V, 7.5A

**Improved Environmental Durability**

- IPx2 water protection & IP5x dust protection
- Splice at 50°C
- Work at 6000m
- 76cm drop on 5 faces
- Fast-heating 15s



\* High-Performance Tool Kit for Fiber Optic Cable System

### 5. 20" CONTAINER DOUBLE LOCK DECOMPRESSION CHAMBER



Inspection Authority	: LR Class
Max Pressure	: 1000 kPa
Hydro Test Pressure	: 1430 kPa
Min / Max Temperature	: 0/52 Celcius
Manway Diameter	: 700 mm

### 6. 15" MACHINERY CONTAINER



15 Ft ISO Container with 4Lifting Eye Comprising Of  
1X LP Compressor Quincy 390 Capacity 63Cfm  
1X HP Compressor Driven, 440V, 60Hz 3Phase 10Cfm  
Hydarulic Power Unit 12 GPM @2000 PSI  
2X 220V Twin Socket  
1X Junction Box for Power Suplly Connection  
1X Panel with 2 Gauges & HP Regulator  
1X ELCB, Volt, Ampmeter, Main Emergency Stop  
3X Exhaust Fan  
1X 5Legged Lifting Sling With MPI

## 7. SALT 2 DIVERS LAUNCH AND RECOVERY SYSTEM



Guidance Codes & Standards IMCA D023  
 Basket Whinch-HYDRA 1300 Offshore Man Rider Series Whinch  
 Min Lift Capability : Hydraulic Set To 1.0 Ton  
 Max Lifting Speed : 18m/minute  
 Wire Diameter : 13mm Non-Spin  
 Wire Length : 80m  
 Hydraulic Power Pack : Main Pressure, 11kW Power  
 or as determined, 27l/min at 180 Bar  
 Secondary Fixed Displacement 5.5kW,  
 18L/Min at 180 Bar

## 8. WET BELL



- \* Length : 1.235 M
- \* Width : 1.235 M
- \* Height : 2.100 M
- \* Weight in Air : 1.020 Kg (Nett)
- \* Working Load Limit : 1.500 Kg
- \* 2 Sets of Divers Control Manifold C/W
- \* 2X Diver Comms & 1X Diver Camera
- \* Diver 1 & 2 Surface Supply Valves

## 9. DIVING LOW PRESSURE COMPRESSOR



## 10. AIRBANK 200 BAR



## 11. KIRBY MORGAN SERIES 37 & BAND MASK SERIES 18



- \* 5 Set KMB 37
- \* 12 Set KMB 18

## 12. HYDRAULIC BRUSH KART MACHINE



- \* 25 HP FP Power Unit
- \* Cleaning Dimension Max Capacity  
Up to 550M<sup>2</sup> / Hour

- \* Max Operating Pressure Brass 140 Bar and  
Steel 345 Bar
- \* Operating Pressure, Liquid 241 Bar, Air/Gases 69 Bar

### 13. DIVING UMBILICAL



- \* Diving Umbilical with:  
Oxygen Fitting, Communication Port, Camera Connection, etc.
- \* Length :
  - 200 mtr
  - 150 mtr
  - 100 mtr

### 14. GENERATOR SET UP TO 350 KVA



- \* Caterpillar 350 Kva
- \* Cummins 350 kva
- \* Perkins 250 Kva,  
100 Kva & 60 Kva
- \* Highlander 100 Kva
- \* Frequency 50/60 Hz

### 15. IMPACT SUBSEA FLOODED MEMBER DETECTION (ISFMD)



Model ISA500

- \* Frequency : 500 kHz
- \* Resolution : 1 mm
- \* Depth Rating : 6,000 m
- \* Input : 9 - 36 VDC
- \* Cable & Reel : 200 Meter

### 16. WATER JET MACHINE UP TO 20.000 Psi MAXIMUM CAPACITY



- \* Output : 17 GPM
- \* Max. Work Press :  
20.000 Psi
- \* Test Press :  
20.000 Psi
- \* Model : GA 250 BS

### 17. WORKSHOP FACILITY (Up to 3000mm Lathe Machine, Pressing, Welding, Cutting, etc)



## 18. CRANE LOAD TEST EQUIPMENT



- \* Advance, 35 T Cap.
- \* JW Automarine-15 T Cap.
- \* Seaflex up to 70 T Cap.

## 19. EDDY CURRENT



- \* Performs Eddy Current testing inspections using Eddy Current probes in the aerospace, automotive, petrochemical, and power generation industries in the detection of surface or near-surface defects in materials such as aluminum, stainless steel, copper, titanium, brass, Inconel and even carbon steel (surface defect only).

## 20. ULTRASONIC WALL THICKNESS / UNDERWATER UT THICKNESS (TRITEX)



- \* Thru-Coat ®
- \* Live A-scan with Waveform Adjust
- \* Gain Adjust
- \* Extended Blanking
- \* Measurements from one side!
- \* Lightweight and pocket-size
- \* Intuitive, color-coded keypad
- \* Large LCD with backlight

## 21. ULTRASONIC FLAW DETECTOR



- \* Customizable narrowband filtering
- \* Light, ergonomically designed (5.7 lbs / 2.6 Kg)
- \* Fast minimum 60 Hz display update rate
- \* High-power NiMH battery
- \* Automated transducer calibration
- \* Display Freeze holds waveform and soundpath data
- \* Peak Hold and Peak Memory
- \* Alarms, threshold positive/negative, or minimum depth

## 22. MAGNETIC PARTICLE INSPECTION (MPI) FOR UNDERWATER



### PERMANENT MAGNETS:

- \* Portable and convenient means of magnetising components for crack detection.

### YOKE MAGNETS:

- \* To achieve the best inspection efficiency with small
- \* To form a strong magnetic field with a AC type
- \* To apply dry, wet and fluorescent magnetic particles
- \* To perform inspection any place such as laboratory, production plant, assembly parts and welding part.

**23. WATER JET PUMP**



**24. RUBBER BOAT**



**25. PNEUMATIC WINCHES / AIR TUGGER**



Model QJZ-1000  
 \* Max. Lifting Force: 10.000 Kg  
 \* Rate Power: 30 KW  
 \* General Weight: 1.300 Kg

Model QJZ-5000  
 \* Max. Lifting Force: 5.000 Kg  
 \* Rate Power: 16 KW  
 \* General Weight: 800 Kg

**26. C-PHONE 3 DIVER INTERCOM & HP LP AIR CONTROL & DEPTH**



**27. ENERPAC ZA-4208TX**



ENERPAC  
 Torque Wrench S3000PX  
 Capacity: 3225 lbf.ft/4373 Nm  
 Pressure: 10.000 Psi / 690 bar

Manufacture :  
 Norbar Torque Tools Ltd

**28. FORKLIFT**



5 Ton and 10 Ton Capacity

**28. LIFTING EQUIPMENT**



Shackles, Chain Blok, Lever Block, etc as Rigging Tools



# OUR CLIENTS

Safety, Quality, Cost Efficient and Timely Delivery of all our projects are our concerns for the satisfactory of Our Client.

- \* PT. Pertamina Hulu Energi WMO
- \* PT. Pertamina EP Asset 4
- \* PT. Pertamina (Persero) Shipping
- \* PT. Pertamina Trans Kontinental
- \* Petronas Carigali Ketapang II Ltd
- \* ExxonMobil Cepu Ltd.
- \* Husky CNOOC Madura Ltd
- \* SAKA Energi Muriah Limited
- \* ConocoPhillips Indonesia Inc Ltd
- \* CNOOC Ses Ltd
- \* Star Energy (Kakap) Ltd
- \* Drydocks World
- \* Saipem Sdn Bhd
- \* Gryphon Energy Group
- \* PT. Armada Gema Nusantara
- \* PT. Arah Prana
- \* Teras Offshore
- \* KS Drilling
- \* PT. COSL Indo - COSL Driling
- \* PT. Apexindo Pratama Duta Tbk.
- \* PT. M3 Ketapang Sejahtera
- \* Mermaid Drilling, Sdn Bhd
- \* PT. Karimun Sembawang Shipyard
- \* PT. Bumi Suksesindo
- \* PT. Pamapersada Nusantara
- \* PT. Kuala Pelabuhan Indonesia – Freeport, Papua
- \* PT. Salam Pasifik Indonesia Line (SPIL)
- \* Anglo Eastern Shipmanagement (S) Pte. Ltd
- \* MTM Ship Management Pte Ltd
- \* PT. Trada Maritime, Tbk
- \* PT. PAL Indonesia
- \* PT. Berlian Laju Tanker, Tbk.
- \* PT. Mitra Bahtera Segara Sejati
- \* PT. Dharma Lautan Utama
- \* PT. Meratus Advance Maritim
- \* PT. Meratus Line
- \* PT. Meratus Tongkang service
- \* PT. Mandiri Abadi Sentosa
- \* PT. Maritime Barito Perkasa
- \* PT. Surf Marine Indonesia
- \* PT. Pelayaran Bina Buana Raya Tbk.
- \* PT. Global Carriers Berhad
- \* PT. Batulicin Nusantara Maritim
- \* PT. Trans Power Marine, Tbk
- \* PT. Rig Tender Indonesia
- \* PT. Batuah Abadi Lines
- \* PT. Dian Bahari Sejati
- \* PT. Bosowa LLYOD Makassar
- \* PT. Pelayaran Nasional Indonesia (Persero)
- \* PT. Gurita Lintas Samudera
- \* PT. ALTUS Logistic
- \* PT. Pupuk Sriwijaya
- \* PT. Tide Water Marine International
- \* PT. Humpuss Transportasi Kimia
- \* PT. Bahtera Ferry Sentosa
- \* Posh Fleet Services, Singapore
- \* Wecoy Services Pte. Ltd
- \* PT. Sea Bridge Ship
- \* The Pasific Shipping Lines co
- \* PT. Andalan Mitra Bahari
- \* Pacific Shipping Co.
- \* PT. Jawa Tirta Marine
- \* Tanker Pacific Management Singapore
- \* ASP Singapore
- \* PT. Navigator Gas UK
- \* Wan Hai Steamship - Korea
- \* CMA CGM Group - Greece
- \* Gemek Denizcilik - Greece
- \* HAMIKAR Sdn Bhd
- \* Suntech Corporation FZCO United Arab
- \* PT. Rajawali Swiber Cakrawala
- \* PT. Idros Services
- \* PT. Mitra Ocean Line
- \* SMIT Singapore Pte. Ltd



# BUSINESS PARTNERS

Years of dedicated services had brought PT AQUAMARINE DIVINDO INSPECTION to achieve both global & regional marine and offshore industries recognitions and appreciations. Thanks to our team for their constant care & determined services delivered warm heartedly towards our worldwide clients from all over the worlds. Thanks to our industry partners too who had been supporting us by issuing recognitions & standard certificates as an integral part of our services & inline with our vision & mission.

We understand that customer satisfaction has always be our second to none in list that must be at anytime well maintained. We focus our investment for it by equipping ourselves with industrial standards as well as competencies and determination.

To name some of it, PT AQUAMARINE DIVINDO INSPECTION has obtained Certificates of Competencies and Recognitions issued by:

- ISO 9001:2015, ISO 14001:2015, ISO 45001:2018, ISO 17020:2012, ISO 37001:2016
- SKT MIGAS (SKT Pengoperasian dan Pemeliharaan, SKT Pengujian Teknis, SKT Inspeksi Teknis, SKT Pelaksanaan Konstruksi & SKT Pekerjaan Bawah Air)
- SKUP MIGAS (Bintang 3)
- IMCA (International Marine Contractors Association) & ADCI (Association of Diving Contractor Indonesia)
- IACS Certificate of Recognition/Competencies from ABS, BKI, BV, NKK, DNV, LR, RINA, KR, etc.



CERTIFICATE OF ENGAGEMENT



2013 QHSE PERFORMANCE



SAFETY MANHOURS UPDATE: 1.436.130 HOURS



For more information, please contact:  
**PT. AQUAMARINE DIVINDO INSPECTION**

**HEAD OFFICE :**

KOMP. PERGUDANGAN 88 BLOCK C5-C7  
Jl. Raya Sedati Gede 88 Juanda Airport, Sidoarjo, East Java – Indonesia 61253  
Phone : +6231 8690099 (Hunting), +6231 8690078, +6231 8690079  
Fax: +6231 8680089  
Email: inspection@aquamarine.id

Jakarta Branch Office:  
GREEN SEDAYU BIZPARK BLOCK GS 8B NO.09  
RT.11/RW.06, Cakung Timur, Kec. Cakung,  
Jakarta Timur, DKI Jakarta – Indonesia 13910  
Phone/Fax : +62 21 21057169

Batam Branch Office:  
SUPERBLOCK IMPERIUM  
Jl. Sudirman, Taman Baloi - Batam  
Phone : +62778 8013290  
Email : batam@aquamarine.id

 PT. AQUAMARINE DIVINDO INSPECTION

 Pt\_Aquamarine

 pt\_aquamarine

[www.aquamarine.id](http://www.aquamarine.id)

